

4

3

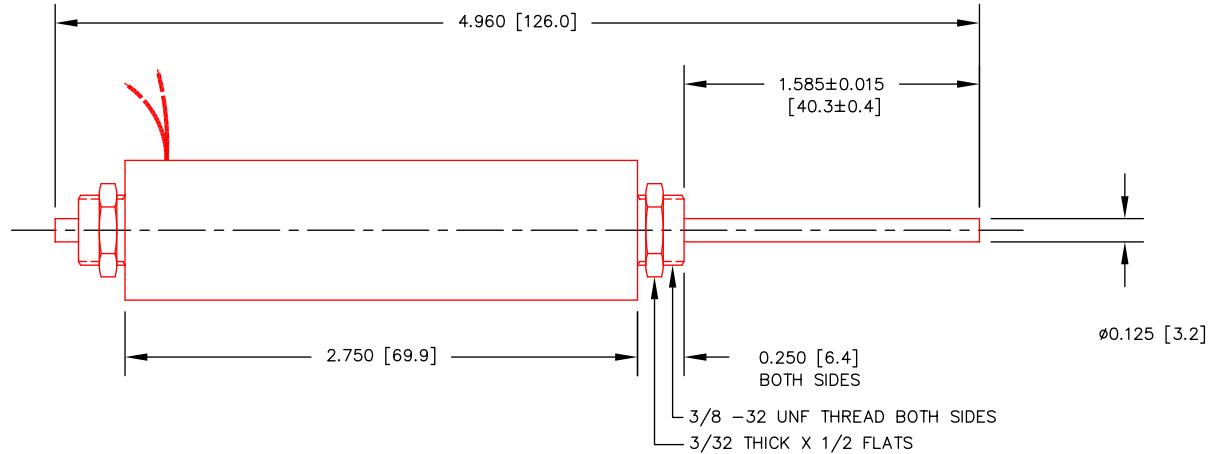
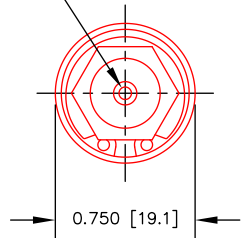
2

1

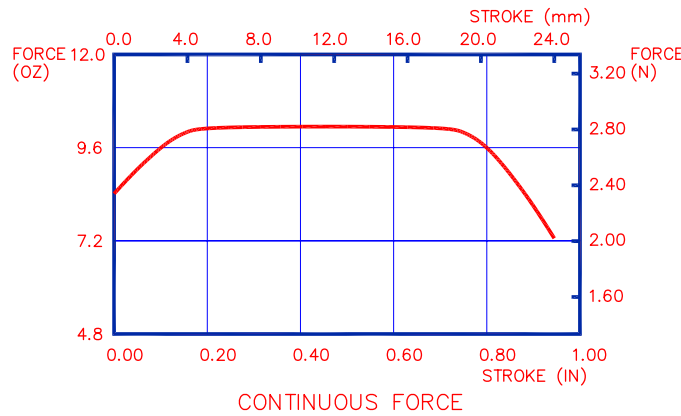
SHOWN IN FORWARD EXTENDED SHAFT POSITION

REVISIONS					
ZONE	LETTER	DESCRIPTION	DATE	CHECKED	APPROVED

2-56 UNC-2B X 0.20 [5.1] MIN DP BOTH SIDES



INTERMITTENT FORCE @10% DUTY CYCLE	8.9 N	32.1 OZ
CONTINUOUS FORCE	2.8 N	10.1 OZ
FORCE CONSTANT	3.4 N/A	12.2 OZ/A
BACK EMF CONSTANT	3.4 V/M/S	0.086 V/IN/S
STROKE	24.4 mm	0.960 IN
MOVING MASS	36 GR	1.27 OZ
TOTAL MASS	100 GR	3.53 OZ
COIL RESISTANCE	10.2 Ohms	
COIL INDUCTANCE @ 1000 Hz	1.9 mH	
MAX CONTINUOUS POWER	7.0 W	
MAX TOTAL SHAFT SIDE LOAD	2.0 N	7.2 OZ
LINEAR BEARING TYPE	PLAIN BUSHING	



THIS DOCUMENT, WHETHER OR NOT MARKED AS PROPRIETARY, IS CONSIDERED CONFIDENTIAL AND SHALL REMAIN THE PROPERTY OF MOTICONT AND SHALL BE RETURNED TO MOTICONT UPON REQUEST WITH ALL COPIES MADE THEREOF. THIS DOCUMENT CANNOT BE UTILIZED IN THE MANUFACTURE OF ARTICLES SOLD OR OFFERED OR DISCLOSED TO ANYONE AND NO USE OF IT CAN BE MADE UNLESS EXPRESSLY AUTHORIZED BY AND UNDER THE DIRECTION OF MOTICONT. POSSESSION OF THIS DOCUMENT IS ACCEPTED SUBJECT TO THE FOREGOING.

3-MOTOR MAY BE SUPPLIED WITH OPTIONAL SPRINGS.
 2-FOR PROPER HEAT DISSIPATION, THE MOTOR SHOULD BE MOUNTED ON A METALLIC BODY WITH ADEQUATE SURFACE AREA WITH AN UNRESTRICTED FLOW OF AIR.

1-ALL VALUES AT 25°C
 NOTES :
 UNLESS OTHERWISE SPECIFIED

DIMENSIONS ARE IN INCHES (mm) TOLERANCES ON:		MATERIAL	CONTRACT		motiCont			
DECIMALS .xxx	FRACTIONS .xx ± 1/125	FINISH	DRN		LINEAR DIRECT DRIVE MOTOR			
ANGLES ± 1/2°	± .005 ± .01 UNLESS OTHERWISE SPECIFIED		CHKD					
USED ON	NEXT ASSY	APPVD		APPVD	SIZE A	CODE	DWG. NO. DDLM-019-070-01	REV. 1
APPLICATION		SCALE: 1 / 1		SHEET 1 OF 1				

4

3

2

1

D

C

B

A

D

C

B

A