

4

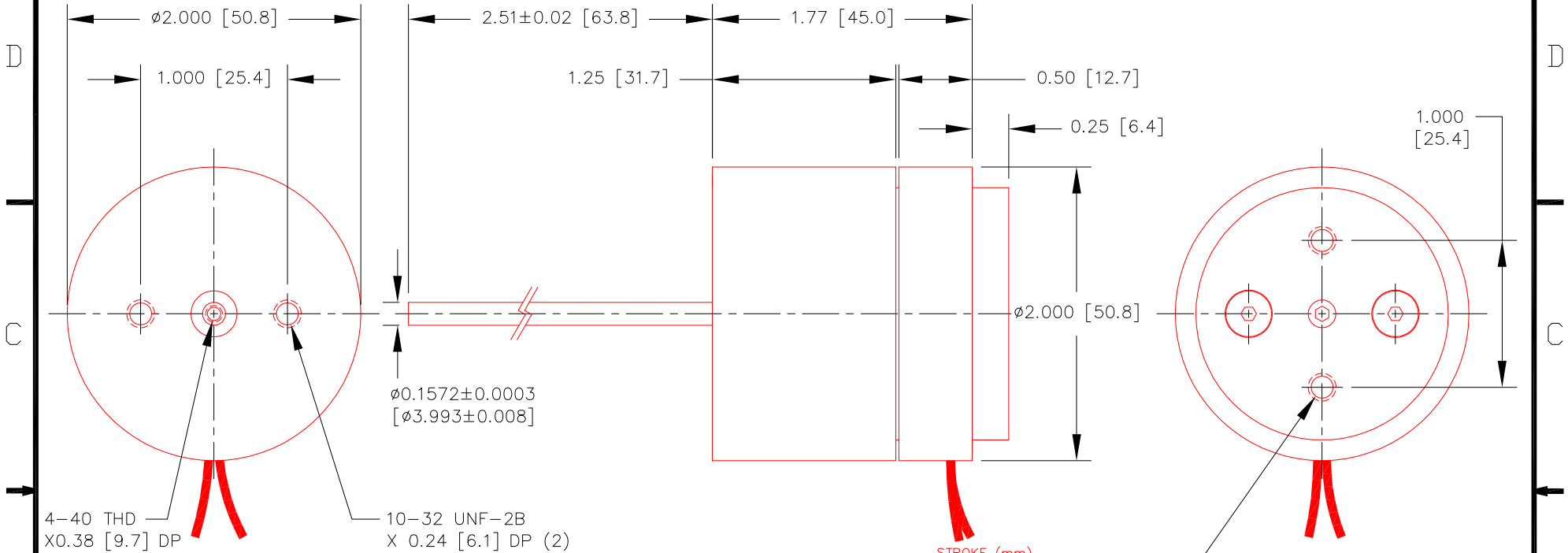
3

2

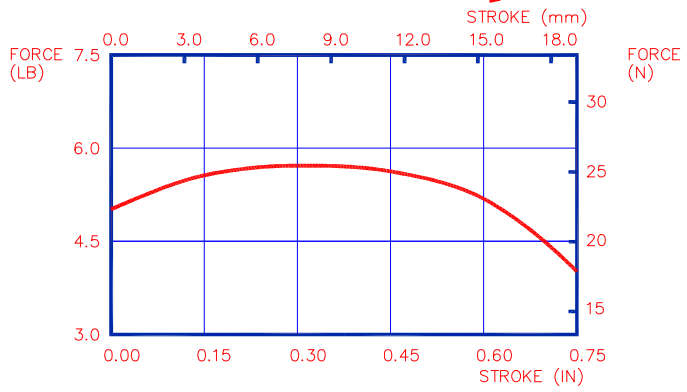
1

SHOWN IN EXTENDED SHAFT POSITION

REVISIONS					
ZONE	LETTER	DESCRIPTION	DATE	CHECKED	APPROVED



INTERMITTENT FORCE @10% DUTY CYCLE	80.4 N	18.1 LB
CONTINUOUS FORCE	25.5 N	5.7 LB
FORCE CONSTANT	7.6 N/A	1.7 LB/A
BACK EMF CONSTANT	7.6 V/M/S	0.19 V/IN/S
STROKE	19.1 mm	0.75 IN
COIL CLEARANCE PER SIDE	0.38 mm	0.015 IN
COIL ASSY MASS	144 GR	5.1 OZ
BODY MASS	393 GR	13.9 OZ
COIL RESISTANCE	2.2 Ohms	
COIL INDUCTANCE @ 1000 Hz	0.8 mH	
MAX CONTINUOUS POWER	25 W	
MAX TOTAL SHAFT SIDE LOAD	22 N	5 LB
LINEAR BEARING TYPE	RECIRCULATING BALL	



THIS DOCUMENT, WHETHER OR NOT MARKED AS PROPRIETARY, IS CONSIDERED CONFIDENTIAL AND SHALL REMAIN THE PROPERTY OF MOTICONT AND SHALL BE RETURNED TO MOTICONT UPON REQUEST WITH ALL COPIES MADE THEREOF. THIS DOCUMENT CANNOT BE UTILIZED IN THE MANUFACTURE OF ARTICLES SOLD OR OFFERED OR DISCLOSED TO ANYONE AND NO USE OF IT CAN BE MADE UNLESS EXPRESSLY AUTHORIZED BY AND UNDER THE DIRECTION OF MOTICONT. POSSESSION OF THIS DOCUMENT IS ACCEPTED SUBJECT TO THE FOREGOING.

A

A

NOTES :
UNLESS OTHERWISE SPECIFIED

ALL VALUES AT 25°C

DIMENSIONS ARE IN INCHES (mm) TOLERANCES ON: DECIMALS FRACTIONS ANGLES .XXX .XX ± 1/125 ± 1/2' ± .005 ± .01 UNLESS OTHERWISE SPECIFIED	
USED ON	NEXT ASSY
APPLICATION	

MATERIAL	CONTRACT	
FINISH	DRN	CHKD
	APPVD	APPVD
	SCALE: 1 / 1	

motiCont			
LINEAR VOICE COIL MOTOR			
SIZE	CODE	DWG. NO.	REV.
A		GVCM-051-032-01	2
SCALE: 1 / 1		SHEET 1 OF 1	

4

3

2

1