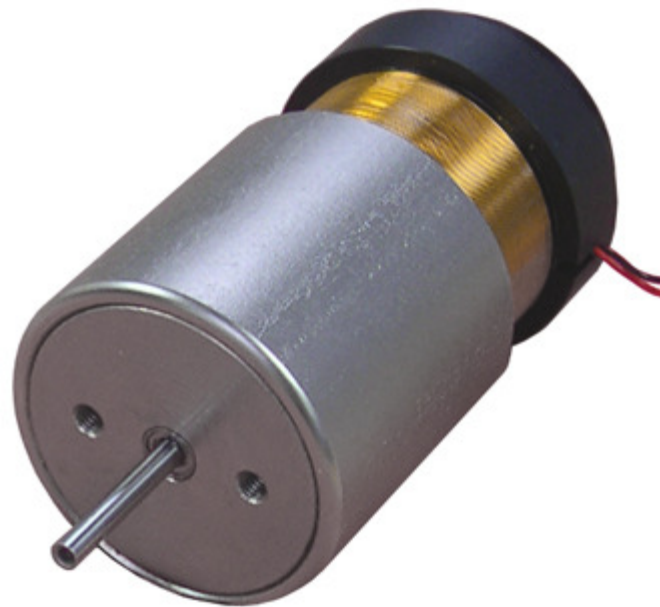


# Linear DC Motors with Internal Bearing



**moti:cont**

**Moticont**  
6901 Woodley Avenue  
Van Nuys, California 91406 U.S.A.  
[www.moticont.com](http://www.moticont.com)

**Toll Free (888) 785-1804**  
+1 (818) 785-1800  
FAX +1 (818) 785-5713  
[moticont@moticont.com](mailto:moticont@moticont.com)

## Linear Voice Coil Motors with Internal Bearing Comparison Table

Model #	Stroke		Continuous Force		Intermittent Force @ 10% Duty Cycle		Force Constant		Coil Mass		Body Mass		Housing Outside Diameter		Housing Length	
<b><u>GVCM-051-025-01</u></b>	0.75	inch	6.3	lb	19.9	lb	1.8	lb/A	5.7	oz	23.6	oz	2.000	inch	2.00	inch
	19.1	mm	28.0	N	88.6	N	8.0	N/A	162	gr	668	gr	50.8	mm	50.8	mm
<b><u>GVCM-051-032-01</u></b>	0.75	inch	6.3	lb	19.9	lb	1.8	lb/A	5.7	oz	23.6	oz	2.000	inch	2.00	inch
	19.1	mm	28.0	N	88.6	N	8.0	N/A	162	gr	668	gr	50.8	mm	50.8	mm
<b><u>GVCM-051-051-01</u></b>	0.75	inch	6.3	lb	19.9	lb	1.8	lb/A	5.7	oz	23.6	oz	2.000	inch	2.00	inch
	19.1	mm	28.0	N	88.6	N	8.0	N/A	162	gr	668	gr	50.8	mm	50.8	mm
<b><u>GVCM-051-064-01</u></b>	1.25	inch	6.6	lb	20.9	lb	2.2	lb/A	6.8	oz	28.9	oz	2.000	inch	2.50	inch
	31.8	mm	29.4	N	92.9	N	9.6	N/A	192	gr	818	gr	50.8	mm	63.5	mm
<b><u>GVCM-051-089-01</u></b>	2.25	inch	5.9	lb	18.6	lb	2.3	lb/A		oz		oz	2.000	inch	3.50	inch
	57.2	mm	26.2	N	82.7	N	10.1	N/A		gr		gr	50.8	mm	88.9	mm
<b><u>GVCM-051-165-01</u></b>	5.25	inch	4.8	lb	15.3	lb	2.4	lb/A		oz		oz	2.000	inch	6.50	inch
	133.4	mm	21.5	N	68.1	N	10.6	N/A		gr		gr	50.8	mm	165.1	mm



**Moticont**  
 6901 Woodley Avenue  
 Van Nuys, California 91406 U.S.A.  
[www.moticont.com](http://www.moticont.com)

**Toll Free (888) 785-1804**  
 +1 (818) 785-1800  
 FAX +1 (818) 785-5713  
[moticont@moticont.com](mailto:moticont@moticont.com)

<b><u>GVCM-070-038-01</u></b>	0.50	inch	14.5	lb	45.9	lb	4.7	lb/A	0.52	lb	2.10	lb	2.750	inch	1.50	inch
	12.7	mm	64.6	N	204.4	N	21.2	N/A	234	gr	0.93	kg	69.9	mm	28.6	mm
<b><u>GVCM-070-051-01</u></b>	1.00	inch	14.6	lb	46.0	lb	5.5	lb/A	0.62	lb	2.70	lb	2.750	inch	2.00	inch
	25.4	mm	64.7	N	204.3	N	24.4	N/A	282	gr	1.22	kg	69.9	mm	50.8	mm
<b><u>GVCM-070-064-01</u></b>	1.50	inch	14.4	lb	45.5	lb	2.5	lb/A	0.77	lb	3.30	lb	2.750	inch	2.50	inch
	38.2	mm	64.0	N	202.0	N	11.0	N/A	350	gr	1.50	kg	69.9	mm	63.5	mm
<b><u>GVCM-095-038-01</u></b>	0.50	inch	23.1	lb	73.1	lb	8.5	lb/A	0.81	lb	4.03	lb	3.750	inch	1.50	inch
	12.7	mm	102.7	N	324.4	N	38.0	N/A	368	gr	1.83	kg	95.3	mm	28.6	mm
<b><u>GVCM-095-051-01</u></b>	1.00	inch	23.4	lb	70.0	lb	10.1	lb/A	0.96	lb	5.29	lb	3.750	inch	2.0	inch
	25.4	mm	104.0	N	328.7	N	44.8	N/A	437	gr	2.40	kg	95.3	mm	50.8	mm
<b><u>GVCM-095-064-01</u></b>	1.50	inch	23.1	lb	73.1	lb	4.8	lb/A	1.17	lb	6.55	lb	3.750	inch	2.50	inch
	38.2	mm	102.7	N	102.7	N	21.1	N/A	529	gr	2.97	kg	95.3	mm	63.5	mm

The intermittent force at 10% duty cycle is equal to 3.16 times the continuous force.

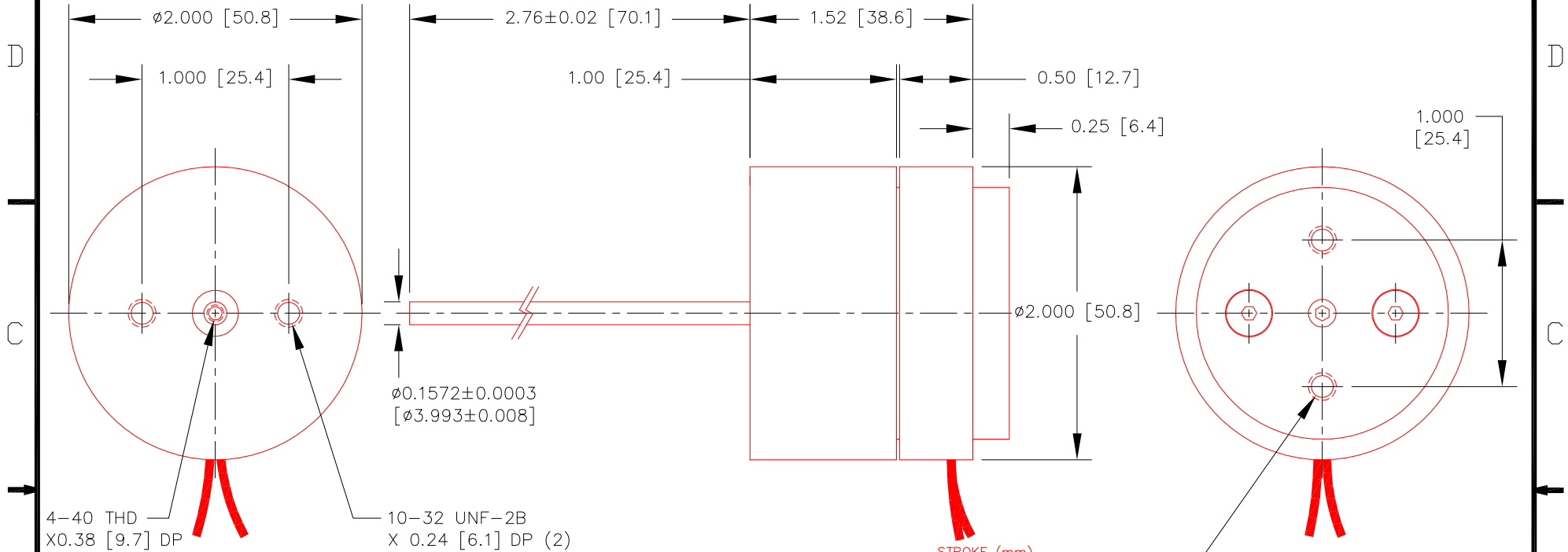
**motiCont**

**Moticont**  
6901 Woodley Avenue  
Van Nuys, California 91406 U.S.A.  
www.moticont.com

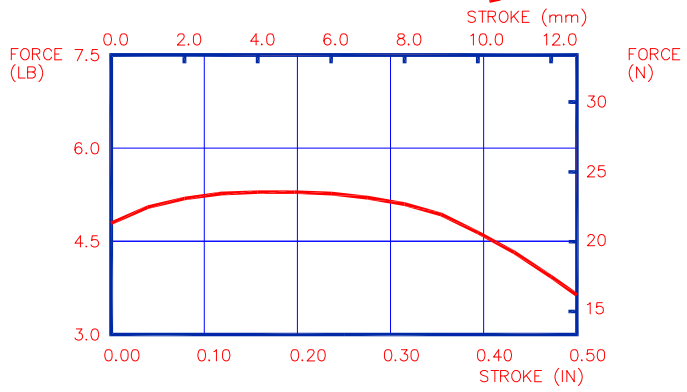
**Toll Free (888) 785-1804**  
+1 (818) 785-1800  
FAX +1 (818) 785-5713  
motiCont@moticont.com

SHOWN IN EXTENDED SHAFT POSITION

REVISIONS					
ZONE	LETTER	DESCRIPTION	DATE	CHECKED	APPROVED



INTERMITTENT FORCE @10% DUTY CYCLE	74.4 N	16.7 LB
CONTINUOUS FORCE	23.54 N	5.3 LB
FORCE CONSTANT	6.9 N/A	1.5 LB/A
BACK EMF CONSTANT	6.9 V/M/S	0.17 V/IN/S
STROKE	12.7 mm	0.50 IN
COIL CLEARANCE PER SIDE	0.38 mm	0.015 IN
COIL ASSY MASS	132 GR	4.7 OZ
BODY MASS	320 GR	11.3 OZ
COIL RESISTANCE	1.7 Ohms	
COIL INDUCTANCE @ 1000 Hz	0.6 mH	
MAX CONTINUOUS POWER	20 W	
MAX TOTAL SHAFT SIDE LOAD	22 N	5 LB
LINEAR BEARING TYPE	RECIRCULATING BALL	



THIS DOCUMENT, WHETHER OR NOT MARKED AS PROPRIETARY, IS CONSIDERED CONFIDENTIAL AND SHALL REMAIN THE PROPERTY OF MOTICONT AND SHALL BE RETURNED TO MOTICONT UPON REQUEST WITH ALL COPIES MADE THEREOF. THIS DOCUMENT CANNOT BE UTILIZED IN THE MANUFACTURE OF ARTICLES SOLD OR OFFERED OR DISCLOSED TO ANYONE AND NO USE OF IT CAN BE MADE UNLESS EXPRESSLY AUTHORIZED BY AND UNDER THE DIRECTION OF MOTICONT. POSSESSION OF THIS DOCUMENT IS ACCEPTED SUBJECT TO THE FOREGOING.

NOTES :  
UNLESS OTHERWISE SPECIFIED

ALL VALUES AT 25°C

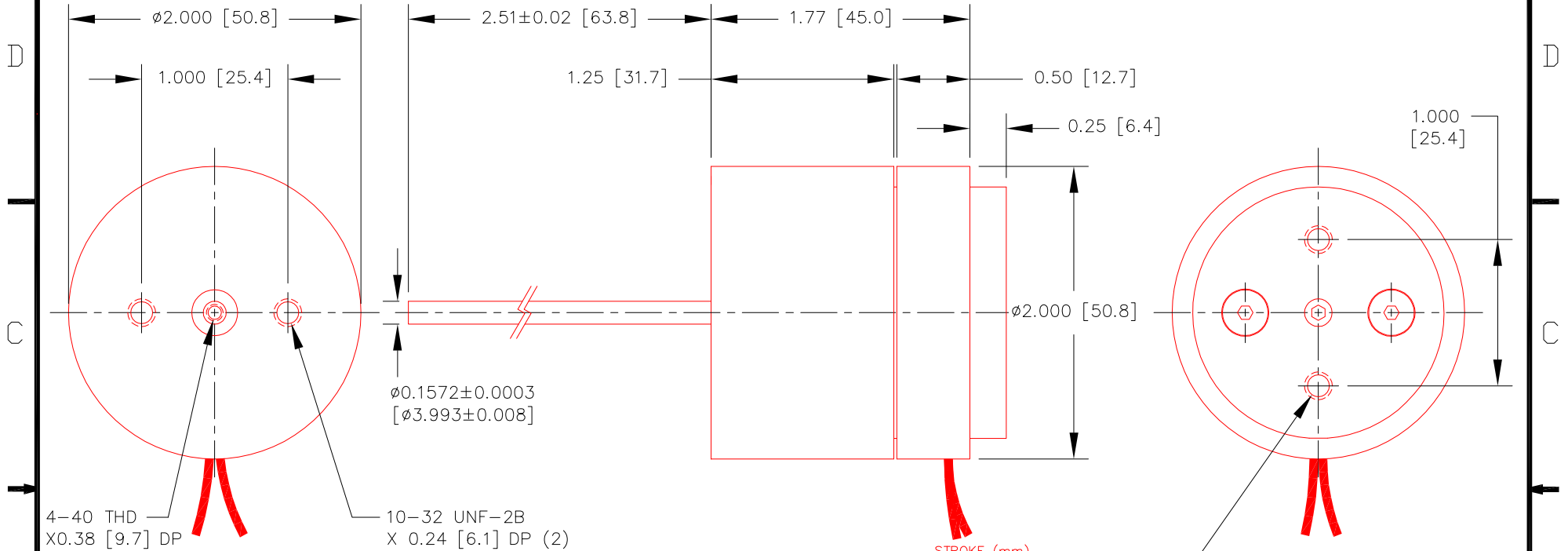
DIMENSIONS ARE IN INCHES (mm) TOLERANCES ON: DECIMALS FRACTIONS ANGLES .XXX .XX ± 1/125 ± 1/2' ± .005 ± .01 UNLESS OTHERWISE SPECIFIED	
USED ON	NEXT ASSY
APPLICATION	

MATERIAL	CONTRACT	
FINISH	DRN	CHKD
	APPVD	APPVD
	APPVD	

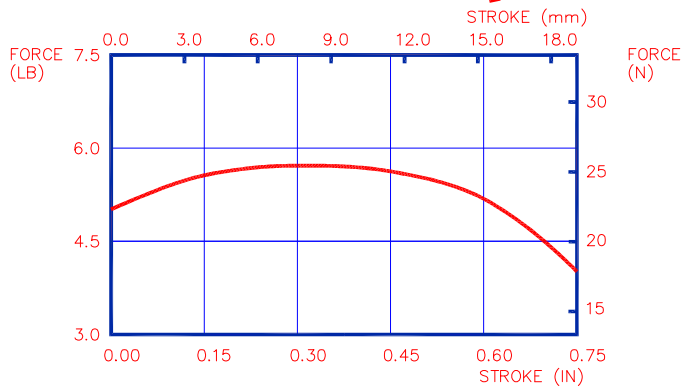
<b>motiCont</b>			
LINEAR VOICE COIL MOTOR			
SIZE	CODE	DWG. NO.	REV.
A		GVCM-051-025-01	2
SCALE: 1 / 1		SHEET 1 OF 1	

SHOWN IN EXTENDED SHAFT POSITION

REVISIONS					
ZONE	LETTER	DESCRIPTION	DATE	CHECKED	APPROVED



INTERMITTENT FORCE @10% DUTY CYCLE	80.4 N	18.1 LB
CONTINUOUS FORCE	25.5 N	5.7 LB
FORCE CONSTANT	7.6 N/A	1.7 LB/A
BACK EMF CONSTANT	7.6 V/M/S	0.19 V/IN/S
STROKE	19.1 mm	0.75 IN
COIL CLEARANCE PER SIDE	0.38 mm	0.015 IN
COIL ASSY MASS	144 GR	5.1 OZ
BODY MASS	393 GR	13.9 OZ
COIL RESISTANCE	2.2 Ohms	
COIL INDUCTANCE @ 1000 Hz	0.8 mH	
MAX CONTINUOUS POWER	25 W	
MAX TOTAL SHAFT SIDE LOAD	22 N	5 LB
LINEAR BEARING TYPE	RECIRCULATING BALL	



THIS DOCUMENT, WHETHER OR NOT MARKED AS PROPRIETARY, IS CONSIDERED CONFIDENTIAL AND SHALL REMAIN THE PROPERTY OF MOTICONT AND SHALL BE RETURNED TO MOTICONT UPON REQUEST WITH ALL COPIES MADE THEREOF. THIS DOCUMENT CANNOT BE UTILIZED IN THE MANUFACTURE OF ARTICLES SOLD OR OFFERED OR DISCLOSED TO ANYONE AND NO USE OF IT CAN BE MADE UNLESS EXPRESSLY AUTHORIZED BY AND UNDER THE DIRECTION OF MOTICONT. POSSESSION OF THIS DOCUMENT IS ACCEPTED SUBJECT TO THE FOREGOING.

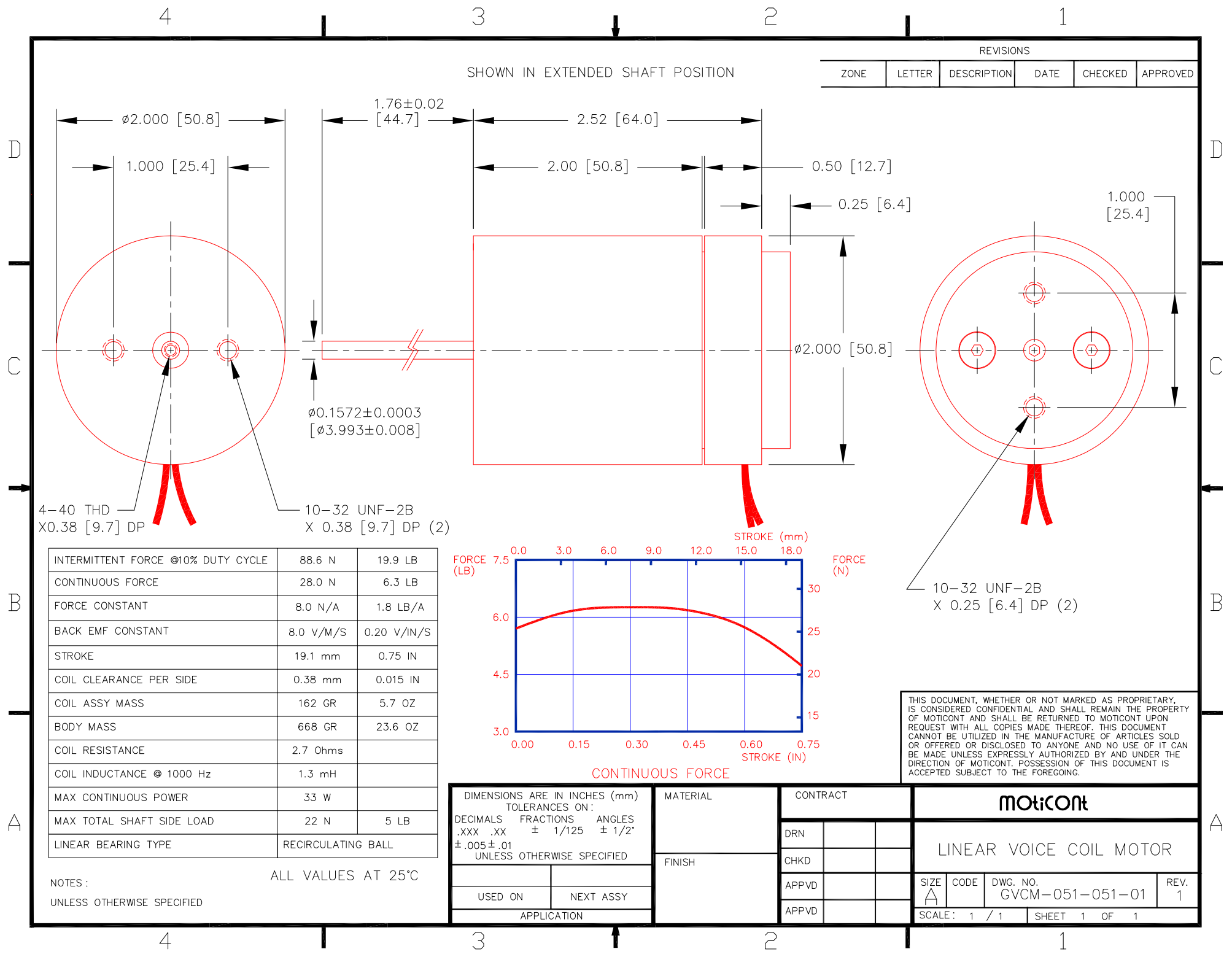
NOTES :  
UNLESS OTHERWISE SPECIFIED

ALL VALUES AT 25°C

DIMENSIONS ARE IN INCHES (mm) TOLERANCES ON:	
DECIMALS	FRACTIONS ANGLES
.XXX .XX	$\pm 1/125 \pm 1/2'$
$\pm .005 \pm .01$	UNLESS OTHERWISE SPECIFIED
USED ON	NEXT ASSY
APPLICATION	

MATERIAL	CONTRACT
FINISH	DRN
	CHKD
	APPVD
	APPVD

<b>motiCont</b>			
LINEAR VOICE COIL MOTOR			
SIZE	CODE	DWG. NO.	REV.
A		GVCM-051-032-01	2
SCALE: 1 / 1		SHEET 1 OF 1	



INTERMITTENT FORCE @10% DUTY CYCLE	88.6 N	19.9 LB
CONTINUOUS FORCE	28.0 N	6.3 LB
FORCE CONSTANT	8.0 N/A	1.8 LB/A
BACK EMF CONSTANT	8.0 V/M/S	0.20 V/IN/S
STROKE	19.1 mm	0.75 IN
COIL CLEARANCE PER SIDE	0.38 mm	0.015 IN
COIL ASSY MASS	162 GR	5.7 OZ
BODY MASS	668 GR	23.6 OZ
COIL RESISTANCE	2.7 Ohms	
COIL INDUCTANCE @ 1000 Hz	1.3 mH	
MAX CONTINUOUS POWER	33 W	
MAX TOTAL SHAFT SIDE LOAD	22 N	5 LB
LINEAR BEARING TYPE	RECIRCULATING BALL	

THIS DOCUMENT, WHETHER OR NOT MARKED AS PROPRIETARY, IS CONSIDERED CONFIDENTIAL AND SHALL REMAIN THE PROPERTY OF MOTICONT AND SHALL BE RETURNED TO MOTICONT UPON REQUEST WITH ALL COPIES MADE THEREOF. THIS DOCUMENT CANNOT BE UTILIZED IN THE MANUFACTURE OF ARTICLES SOLD OR OFFERED OR DISCLOSED TO ANYONE AND NO USE OF IT CAN BE MADE UNLESS EXPRESSLY AUTHORIZED BY AND UNDER THE DIRECTION OF MOTICONT. POSSESSION OF THIS DOCUMENT IS ACCEPTED SUBJECT TO THE FOREGOING.

DIMENSIONS ARE IN INCHES (mm) TOLERANCES ON: DECIMALS FRACTIONS ANGLES .XXX .XX ± 1/125 ± 1/2° ± .005 ± .01 UNLESS OTHERWISE SPECIFIED	
USED ON	NEXT ASSY
APPLICATION	

MATERIAL	CONTRACT	
FINISH	DRN	
	CHKD	
	APPVD	
	APPVD	

<b>motiCont</b>			
LINEAR VOICE COIL MOTOR			
SIZE	CODE	DWG. NO.	REV.
A		GVCM-051-051-01	1
SCALE: 1 / 1		SHEET 1 OF 1	

NOTES:  
UNLESS OTHERWISE SPECIFIED

ALL VALUES AT 25°C

4

3

2

1

SHOWN IN EXTENDED SHAFT POSITION

REVISIONS					
ZONE	LETTER	DESCRIPTION	DATE	CHECKED	APPROVED

D

D

C

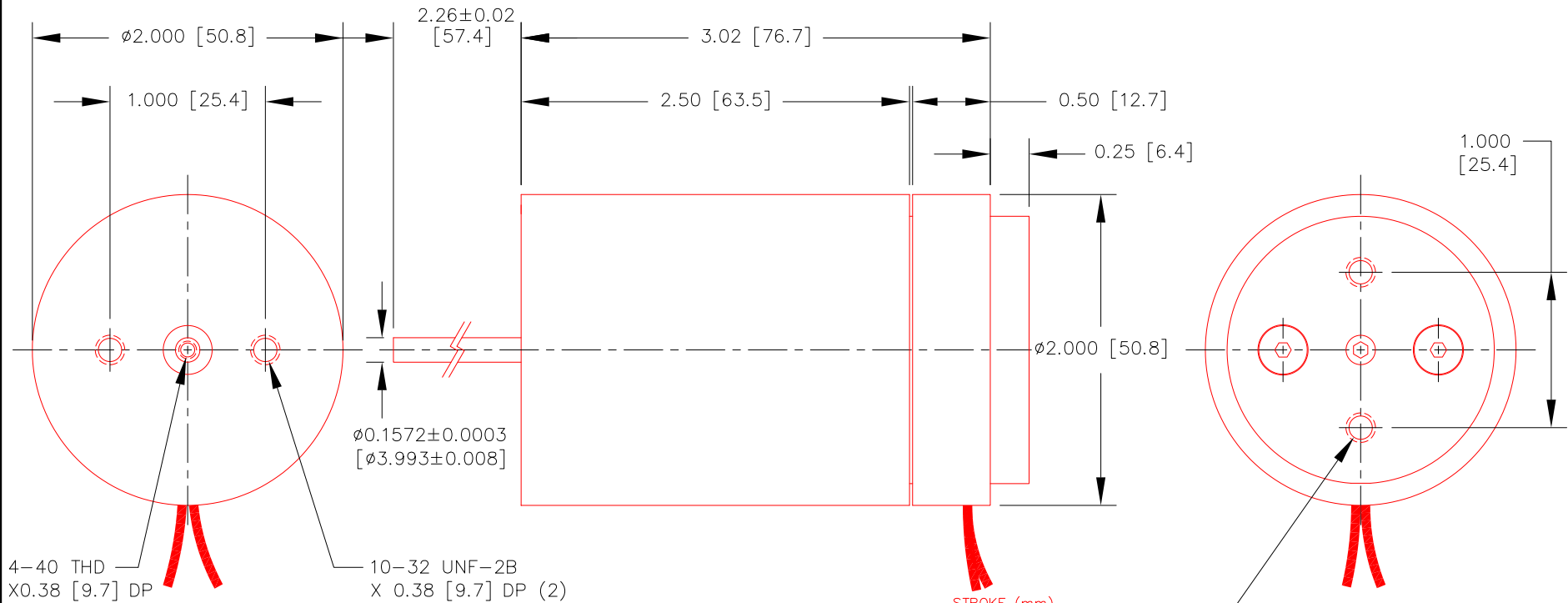
C

B

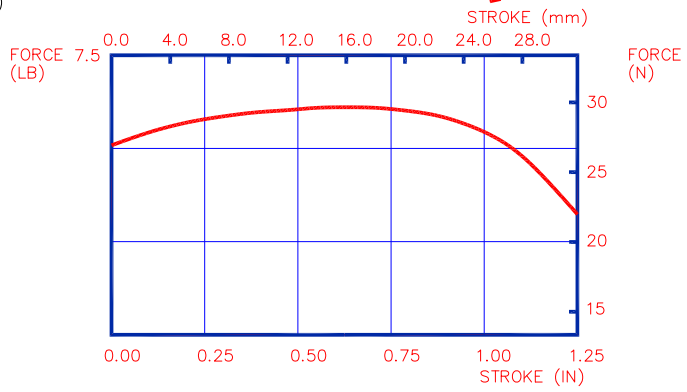
B

A

A



INTERMITTENT FORCE @10% DUTY CYCLE	92.9 N	20.9 LB
CONTINUOUS FORCE	29.4 N	6.6 LB
FORCE CONSTANT	9.6 N/A	2.2 LB/A
BACK EMF CONSTANT	9.6 V/M/S	0.24 V/IN/S
STROKE	31.8 mm	1.25 IN
COIL CLEARANCE PER SIDE	0.38 mm	0.015 IN
COIL ASSY MASS	192 GR	6.8 OZ
BODY MASS	818 GR	28.9 OZ
COIL RESISTANCE	3.9 Ohms	
COIL INDUCTANCE @ 1000 Hz	1.6 mH	
MAX CONTINUOUS POWER	36 W	
MAX TOTAL SHAFT SIDE LOAD	9 N	2 LB
LINEAR BEARING TYPE	RECIRCULATING BALL	



10-32 UNF-2B  
X 0.25 [6.4] DP (2)

THIS DOCUMENT, WHETHER OR NOT MARKED AS PROPRIETARY, IS CONSIDERED CONFIDENTIAL AND SHALL REMAIN THE PROPERTY OF MOTICONT AND SHALL BE RETURNED TO MOTICONT UPON REQUEST WITH ALL COPIES MADE THEREOF. THIS DOCUMENT CANNOT BE UTILIZED IN THE MANUFACTURE OF ARTICLES SOLD OR OFFERED OR DISCLOSED TO ANYONE AND NO USE OF IT CAN BE MADE UNLESS EXPRESSLY AUTHORIZED BY AND UNDER THE DIRECTION OF MOTICONT. POSSESSION OF THIS DOCUMENT IS ACCEPTED SUBJECT TO THE FOREGOING.

NOTES :  
UNLESS OTHERWISE SPECIFIED

ALL VALUES AT 25°C

DIMENSIONS ARE IN INCHES (mm) TOLERANCES ON:	
DECIMALS	FRACTIONS ANGLES
.XXX .XX	$\pm 1/125 \pm 1/2^\circ$
$\pm .005 \pm .01$	UNLESS OTHERWISE SPECIFIED
USED ON	NEXT ASSY
APPLICATION	

MATERIAL	CONTRACT	
FINISH	DRN	CHKD
	APPVD	APPVD
APPLICATION		

<b>motiCont</b>			
LINEAR VOICE COIL MOTOR			
SIZE	CODE	DWG. NO.	REV.
A		GVCM-051-064-01	2
SCALE: 1 / 1		SHEET 1 OF 1	

4

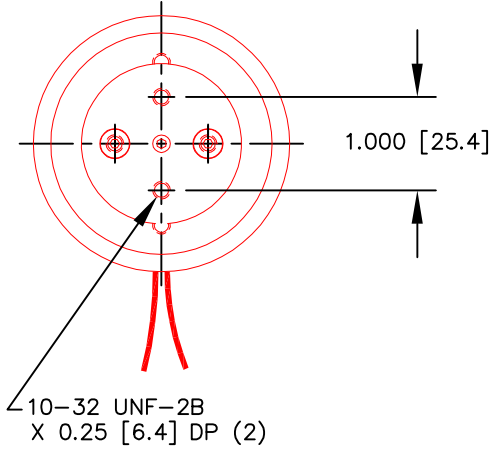
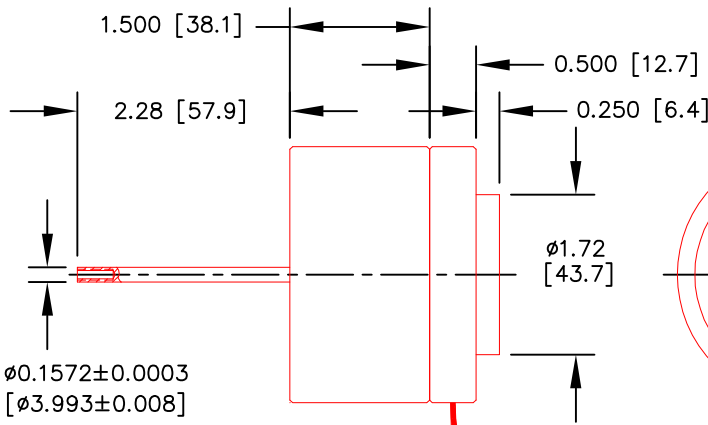
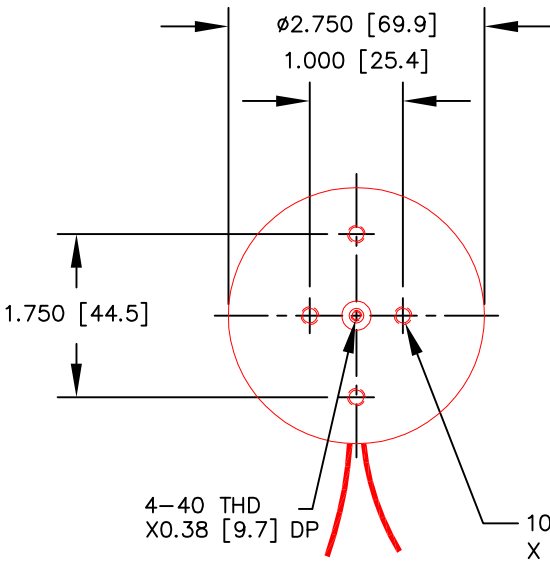
3

2

1

SHOWN IN EXTENDED SHAFT POSITION

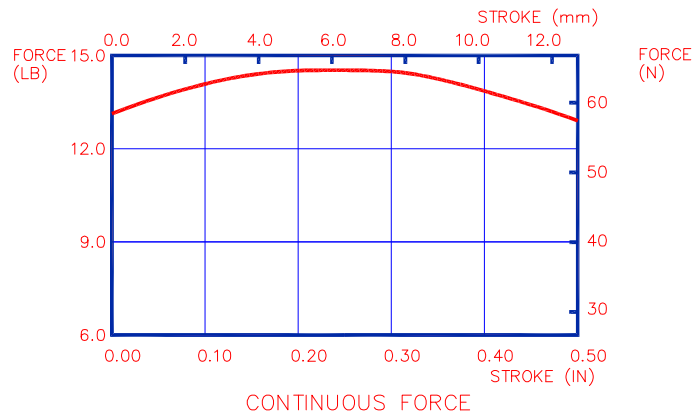
REVISIONS					
ZONE	LETTER	DESCRIPTION	DATE	CHECKED	APPROVED



INTERMITTENT FORCE @10% DUTY CYCLE	204.2 N	45.9 LB
CONTINUOUS FORCE	64.5 N	14.5 LB
FORCE CONSTANT	21.2 N/A	4.7 LB/A
BACK EMF CONSTANT	21.2 V/M/S	0.54 V/IN/S
STROKE	12.7 mm	0.50 IN
COIL CLEARANCE PER SIDE	0.64 mm	0.025 IN
COIL ASSY MASS	234 GR	0.52 LB
BODY MASS	0.93 KG	2.1 LB
COIL RESISTANCE	4.3 Ohms	
COIL INDUCTANCE @ 1000 Hz	2.4 mH	
MAX CONTINUOUS POWER	40 W	
MAX TOTAL SHAFT SIDE LOAD	22 N	5 LB
LINEAR BEARING TYPE	RECIRCULATING BALL	

ALL VALUES AT 25°C

NOTES :  
UNLESS OTHERWISE SPECIFIED



THIS DOCUMENT, WHETHER OR NOT MARKED AS PROPRIETARY, IS CONSIDERED CONFIDENTIAL AND SHALL REMAIN THE PROPERTY OF MOTICONT AND SHALL BE RETURNED TO MOTICONT UPON REQUEST WITH ALL COPIES MADE THEREOF. THIS DOCUMENT CANNOT BE UTILIZED IN THE MANUFACTURE OF ARTICLES SOLD OR OFFERED OR DISCLOSED TO ANYONE AND NO USE OF IT CAN BE MADE UNLESS EXPRESSLY AUTHORIZED BY AND UNDER THE DIRECTION OF MOTICONT. POSSESSION OF THIS DOCUMENT IS ACCEPTED SUBJECT TO THE FOREGOING.

DIMENSIONS ARE IN INCHES [mm] TOLERANCES ON: DECIMALS FRACTIONS ANGLES .XXX .XX ± 1/125 ± 1/2' ± .005 ± .01 UNLESS OTHERWISE SPECIFIED		MATERIAL	CONTRACT		<b>motiCont</b>  LINEAR VOICE COIL MOTOR			
USED ON		FINISH	DRN	CHKD				APPVD
NEXT ASSY		APPLICATION		APPVD	SIZE	CODE	DWG. NO.	REV.
					A		GVCM-070-038-01	1
				SCALE: 1 / 2		SHEET 1 OF 1		

4

3

2

1



4

3

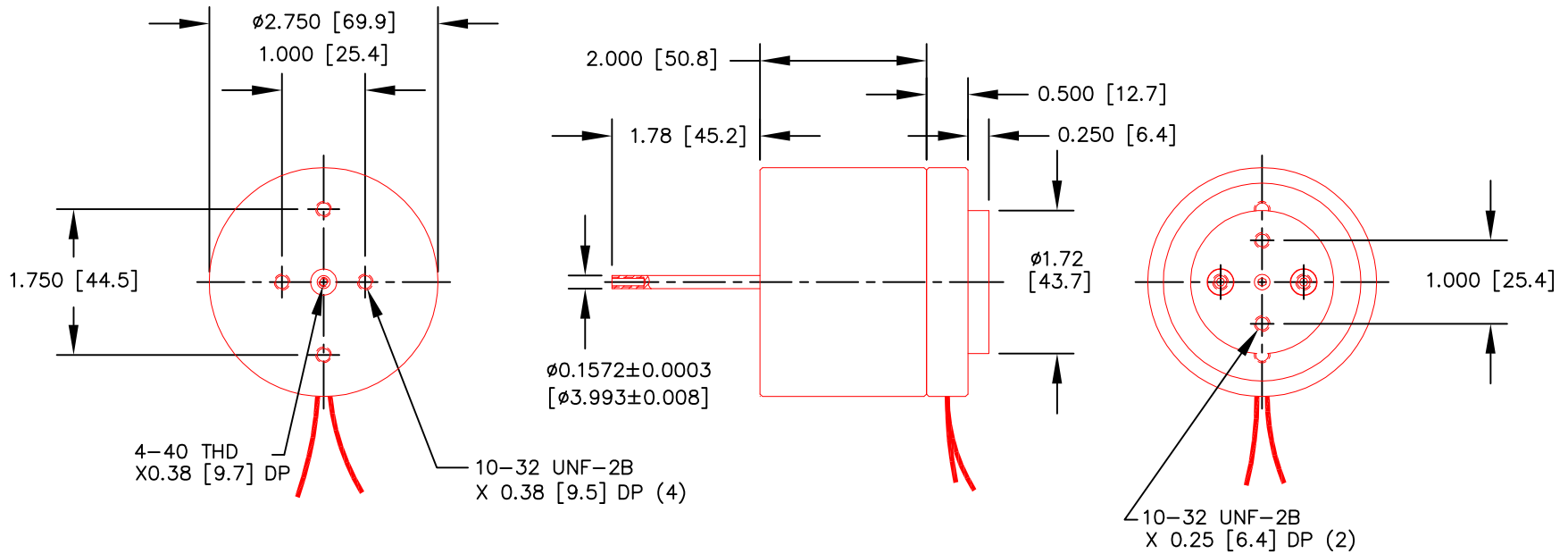
2

1

SHOWN IN EXTENDED SHAFT POSITION

## REVISIONS

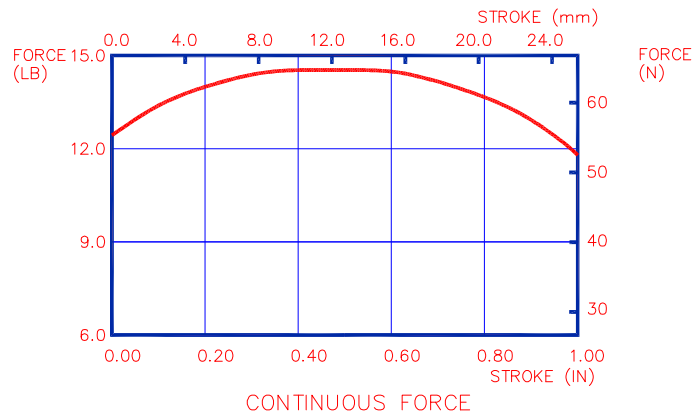
ZONE	LETTER	DESCRIPTION	DATE	CHECKED	APPROVED



INTERMITTENT FORCE @10% DUTY CYCLE	204.7 N	46.0 LB
CONTINUOUS FORCE	70.0 N	14.6 LB
FORCE CONSTANT	24.4 N/A	5.5 LB/A
BACK EMF CONSTANT	24.4 V/M/S	0.62 V/IN/S
STROKE	25.4 mm	1.00 IN
COIL CLEARANCE PER SIDE	0.64 mm	0.025 IN
COIL ASSY MASS	282 GR	0.62 LB
BODY MASS	1.22 KG	2.70 LB
COIL RESISTANCE	6.4 Ohms	
COIL INDUCTANCE @ 1000 Hz	4.0 mH	
MAX CONTINUOUS POWER	45 W	
MAX TOTAL SHAFT SIDE LOAD	22 N	5 LB
LINEAR BEARING TYPE	RECIRCULATING BALL	

ALL VALUES AT 25°C

NOTES:  
UNLESS OTHERWISE SPECIFIED



THIS DOCUMENT, WHETHER OR NOT MARKED AS PROPRIETARY, IS CONSIDERED CONFIDENTIAL AND SHALL REMAIN THE PROPERTY OF MOTICONT AND SHALL BE RETURNED TO MOTICONT UPON REQUEST WITH ALL COPIES MADE THEREOF. THIS DOCUMENT CANNOT BE UTILIZED IN THE MANUFACTURE OF ARTICLES SOLD OR OFFERED OR DISCLOSED TO ANYONE AND NO USE OF IT CAN BE MADE UNLESS EXPRESSLY AUTHORIZED BY AND UNDER THE DIRECTION OF MOTICONT. POSSESSION OF THIS DOCUMENT IS ACCEPTED SUBJECT TO THE FOREGOING.

DIMENSIONS ARE IN INCHES [mm] TOLERANCES ON: DECIMALS FRACTIONS ANGLES .XXX .XX ± 1/125 ± 1/2' ± .005 ± .01 UNLESS OTHERWISE SPECIFIED		MATERIAL	CONTRACT		<b>motiCont</b>  LINEAR VOICE COIL MOTOR			
USED ON		FINISH	DRN					
NEXT ASSY			CHKD		A		GVCM-070-051-01	1
APPLICATION			APPVD		SCALE: 1 / 2		SHEET 1 OF 1	

4

3

2

1

4

3

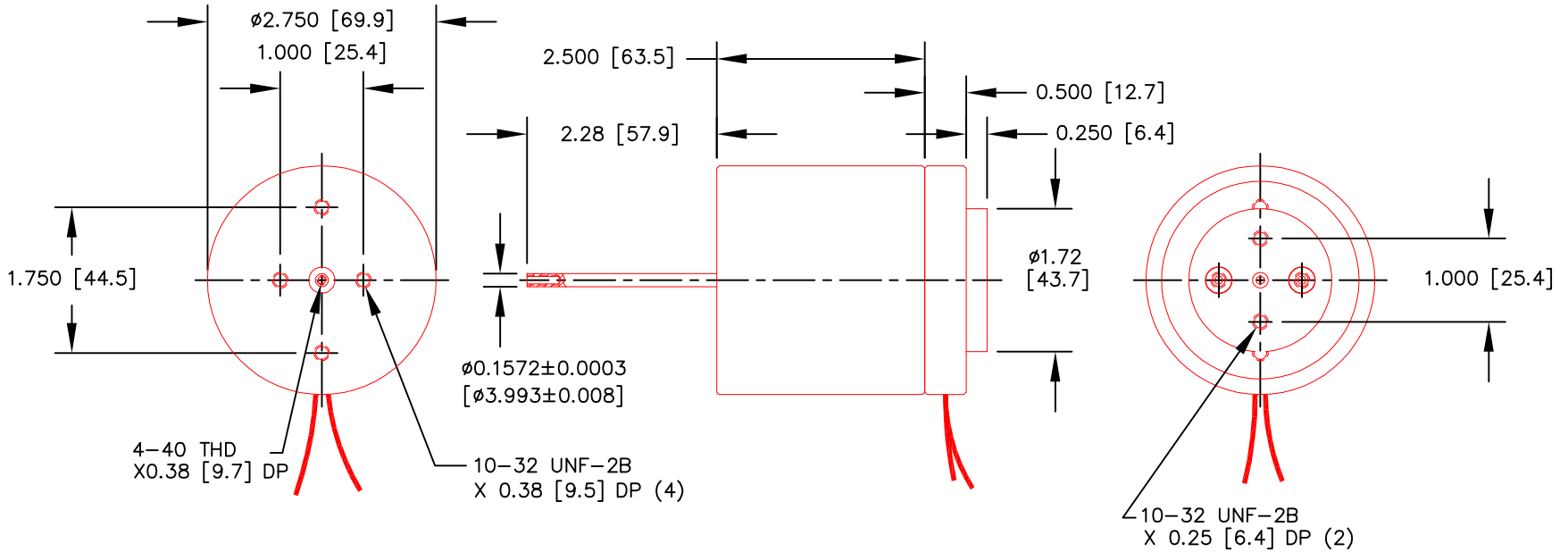
2

1

SHOWN IN EXTENDED SHAFT POSITION

REVISIONS

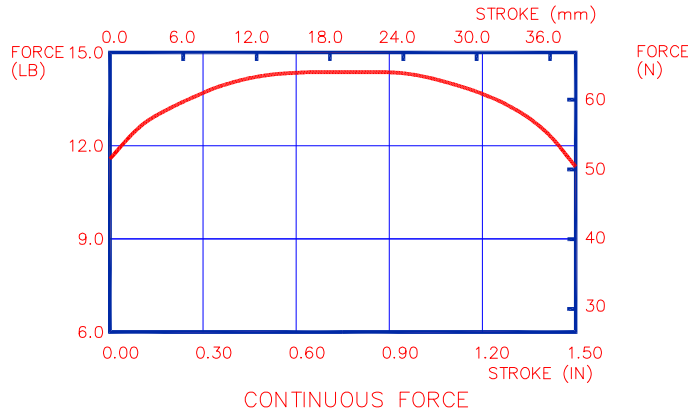
ZONE	LETTER	DESCRIPTION	DATE	CHECKED	APPROVED



INTERMITTENT FORCE @10% DUTY CYCLE	202.5 N	45.5 LB
CONTINUOUS FORCE	64.1 N	14.4 LB
FORCE CONSTANT	11.0 N/A	2.5 LB/A
BACK EMF CONSTANT	11.0 V/M/S	0.28 V/IN/S
STROKE	38.1 mm	1.50 IN
COIL CLEARANCE PER SIDE	0.64 mm	0.025 IN
COIL ASSY MASS	350 GR	0.77 LB
BODY MASS	1.50 KG	3.30 LB
COIL RESISTANCE	1.5 Ohms	
COIL INDUCTANCE @ 1000 Hz	1.0 mH	
MAX CONTINUOUS POWER	50 W	
MAX TOTAL SHAFT SIDE LOAD	9 N	2 LB
LINEAR BEARING TYPE	RECIRCULATING BALL	

ALL VALUES AT 25°C

NOTES :  
UNLESS OTHERWISE SPECIFIED



THIS DOCUMENT, WHETHER OR NOT MARKED AS PROPRIETARY, IS CONSIDERED CONFIDENTIAL AND SHALL REMAIN THE PROPERTY OF MOTICONT AND SHALL BE RETURNED TO MOTICONT UPON REQUEST WITH ALL COPIES MADE THEREOF. THIS DOCUMENT CANNOT BE UTILIZED IN THE MANUFACTURE OF ARTICLES SOLD OR OFFERED OR DISCLOSED TO ANYONE AND NO USE OF IT CAN BE MADE UNLESS EXPRESSLY AUTHORIZED BY AND UNDER THE DIRECTION OF MOTICONT. POSSESSION OF THIS DOCUMENT IS ACCEPTED SUBJECT TO THE FOREGOING.

DIMENSIONS ARE IN INCHES [mm] TOLERANCES ON: DECIMALS FRACTIONS ANGLES .XXX .XX ± 1/125 ± 1/2' ± .005 ± .01 UNLESS OTHERWISE SPECIFIED		MATERIAL	CONTRACT					
USED ON		FINISH	DRN	CHKD				LINEAR VOICE COIL MOTOR
NEXT ASSY		APPLICATION	APPVD	APPVD	SIZE	CODE	DWG. NO.	REV.
					A		GVCM-070-064-01	1
					SCALE: 1 / 2		SHEET 1 OF 1	

4

3

2

1

4

3

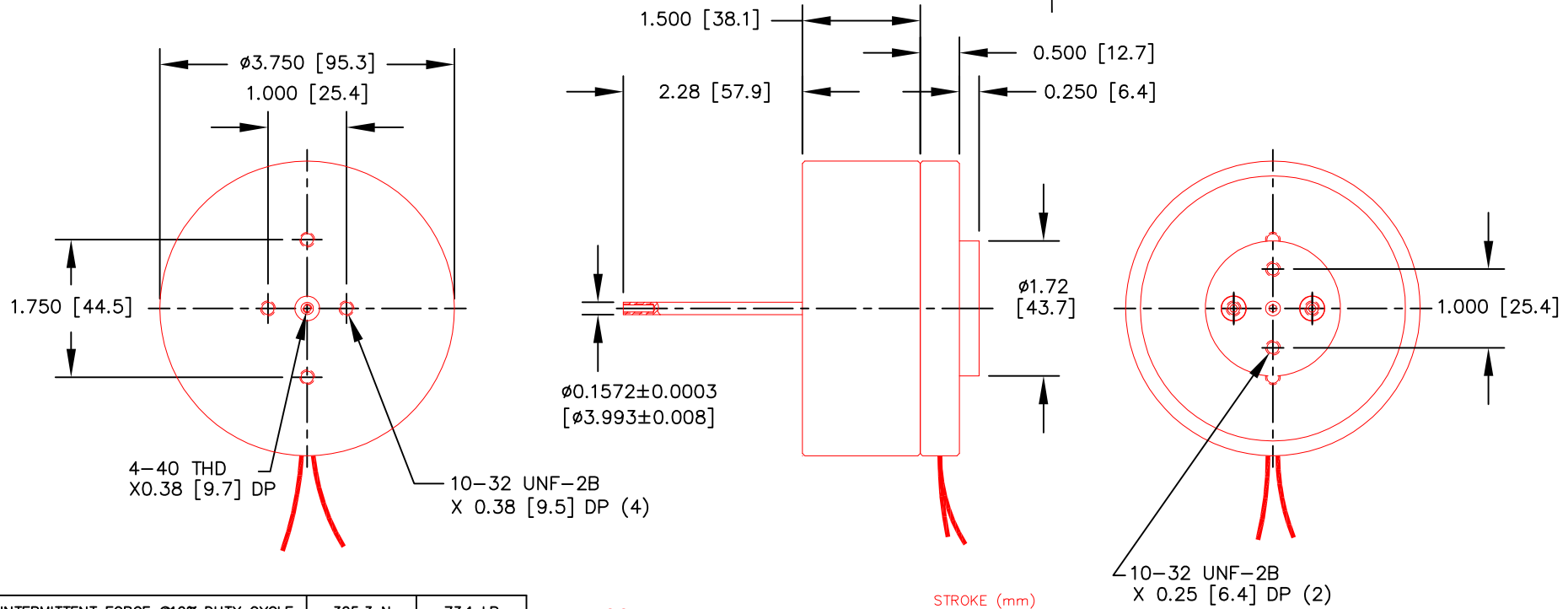
2

1

REVISIONS

ZONE	LETTER	DESCRIPTION	DATE	CHECKED	APPROVED

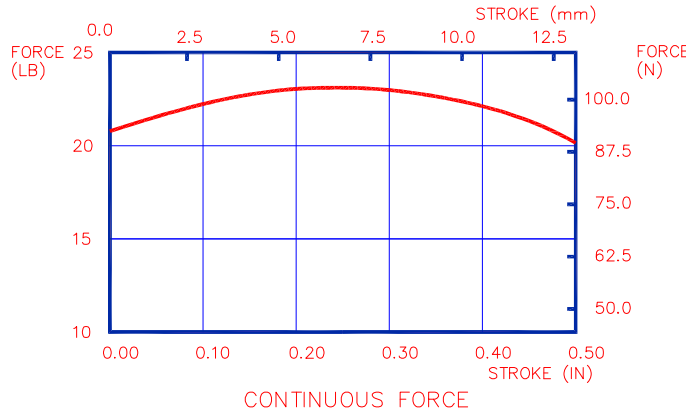
SHOWN IN EXTENDED SHAFT POSITION



INTERMITTENT FORCE @10% DUTY CYCLE	325.3 N	73.1 LB
CONTINUOUS FORCE	102.8 N	23.1 LB
FORCE CONSTANT	38.0 N/A	8.5 LB/A
BACK EMF CONSTANT	38.0 V/M/S	0.96 V/IN/S
STROKE	12.7 mm	0.50 IN
COIL CLEARANCE PER SIDE	0.64 mm	0.025 IN
COIL ASSY MASS	368 GR	0.81 LB
BODY MASS	1.83 KG	4.03 LB
COIL RESISTANCE	6.2 Ohms	
COIL INDUCTANCE @ 1000 Hz	3.5 mH	
MAX CONTINUOUS POWER	45 W	
MAX TOTAL SHAFT SIDE LOAD	22 N	5 LB
LINEAR BEARING TYPE	RECIRCULATING BALL	

ALL VALUES AT 25°C

NOTES :  
UNLESS OTHERWISE SPECIFIED



THIS DOCUMENT, WHETHER OR NOT MARKED AS PROPRIETARY, IS CONSIDERED CONFIDENTIAL AND SHALL REMAIN THE PROPERTY OF MOTICONT AND SHALL BE RETURNED TO MOTICONT UPON REQUEST WITH ALL COPIES MADE THEREOF. THIS DOCUMENT CANNOT BE UTILIZED IN THE MANUFACTURE OF ARTICLES SOLD OR OFFERED OR DISCLOSED TO ANYONE AND NO USE OF IT CAN BE MADE UNLESS EXPRESSLY AUTHORIZED BY AND UNDER THE DIRECTION OF MOTICONT. POSSESSION OF THIS DOCUMENT IS ACCEPTED SUBJECT TO THE FOREGOING.

DIMENSIONS ARE IN INCHES [mm] TOLERANCES ON: DECIMALS FRACTIONS ANGLES .XXX .XX ± 1/125 ± 1/2' ± .005 ± .01 UNLESS OTHERWISE SPECIFIED		MATERIAL	CONTRACT		<b>motiCont</b>  LINEAR VOICE COIL MOTOR		
USED ON		FINISH	DRN	CHKD			
NEXT ASSY		APPLICATION		SIZE	CODE	DWG. NO.	REV.
				A		GVCM-095-038-01	1
				SCALE: 1 / 2		SHEET 1 OF 1	

4

3

2

1

4

3

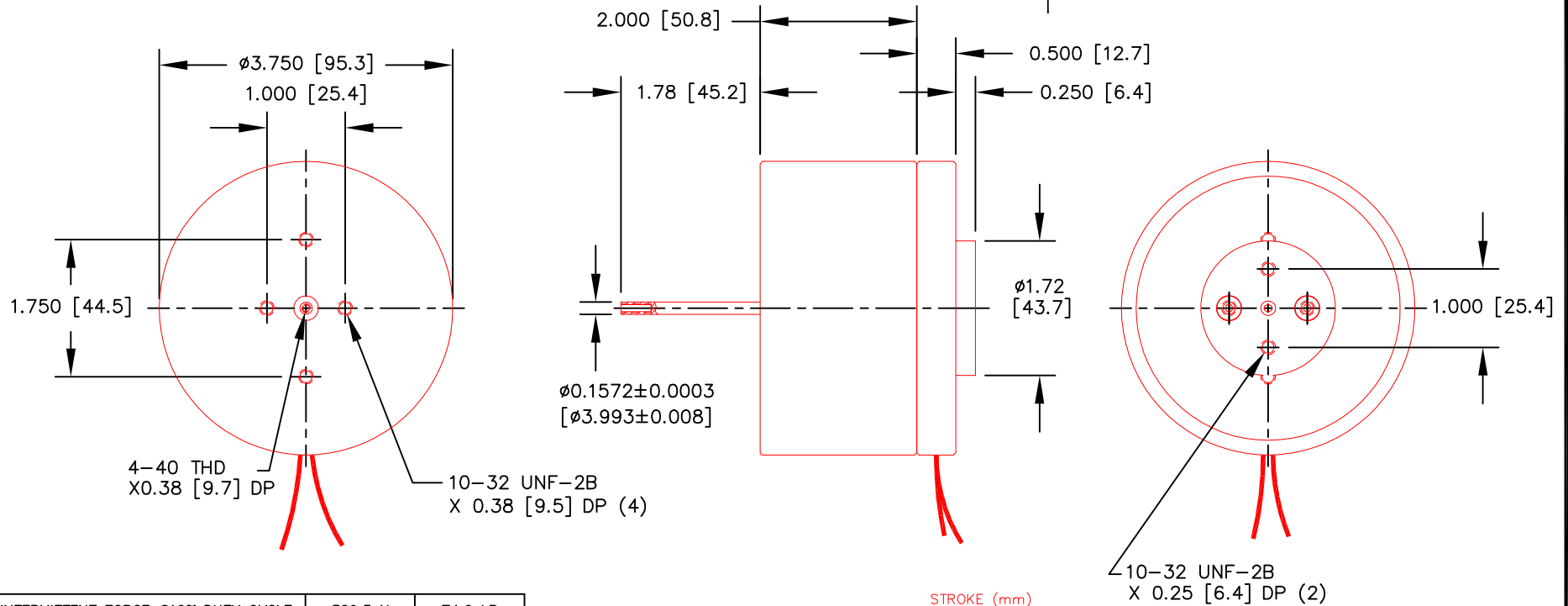
2

1

## REVISIONS

ZONE	LETTER	DESCRIPTION	DATE	CHECKED	APPROVED

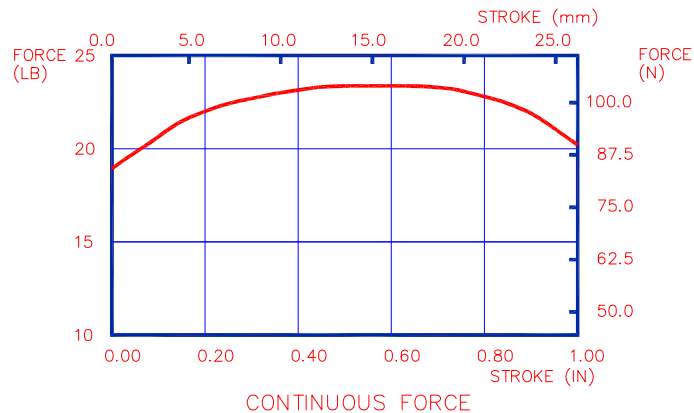
SHOWN IN EXTENDED SHAFT POSITION



INTERMITTENT FORCE @10% DUTY CYCLE	329.3 N	74.0 LB
CONTINUOUS FORCE	104.6 N	23.5 LB
FORCE CONSTANT	44.8 N/A	10.1 LB/A
BACK EMF CONSTANT	44.8 V/M/S	1.14 V/IN/S
STROKE	25.4 mm	1.00 IN
COIL CLEARANCE PER SIDE	0.64 mm	0.025 IN
COIL ASSY MASS	437 GR	0.96 LB
BODY MASS	2.40 KG	5.29 LB
COIL RESISTANCE	9.3 Ohms	
COIL INDUCTANCE @ 1000 Hz	5.0 mH	
MAX CONTINUOUS POWER	50 W	
MAX TOTAL SHAFT SIDE LOAD	22 N	5 LB
LINEAR BEARING TYPE	RECIRCULATING BALL	

ALL VALUES AT 25°C

NOTES:  
UNLESS OTHERWISE SPECIFIED



THIS DOCUMENT, WHETHER OR NOT MARKED AS PROPRIETARY, IS CONSIDERED CONFIDENTIAL AND SHALL REMAIN THE PROPERTY OF MOTICONT AND SHALL BE RETURNED TO MOTICONT UPON REQUEST WITH ALL COPIES MADE THEREOF. THIS DOCUMENT CANNOT BE UTILIZED IN THE MANUFACTURE OF ARTICLES SOLD OR OFFERED OR DISCLOSED TO ANYONE AND NO USE OF IT CAN BE MADE UNLESS EXPRESSLY AUTHORIZED BY AND UNDER THE DIRECTION OF MOTICONT. POSSESSION OF THIS DOCUMENT IS ACCEPTED SUBJECT TO THE FOREGOING.

DIMENSIONS ARE IN INCHES [mm]	
TOLERANCES ON:	
DECIMALS	FRACTIONS
.XXX	.XX
$\pm 1/125$	$\pm 1/2'$
$\pm .005 \pm .01$	UNLESS OTHERWISE SPECIFIED
USED ON	NEXT ASSY
APPLICATION	

MATERIAL	CONTRACT	
FINISH	DRN	
	CHKD	
	APPVD	
	APPVD	

motiCont			
LINEAR VOICE COIL MOTOR			
SIZE	CODE	DWG. NO.	REV.
A		GVCM-095-051-01	1
SCALE: 1 / 2		SHEET 1 OF 1	

4

3

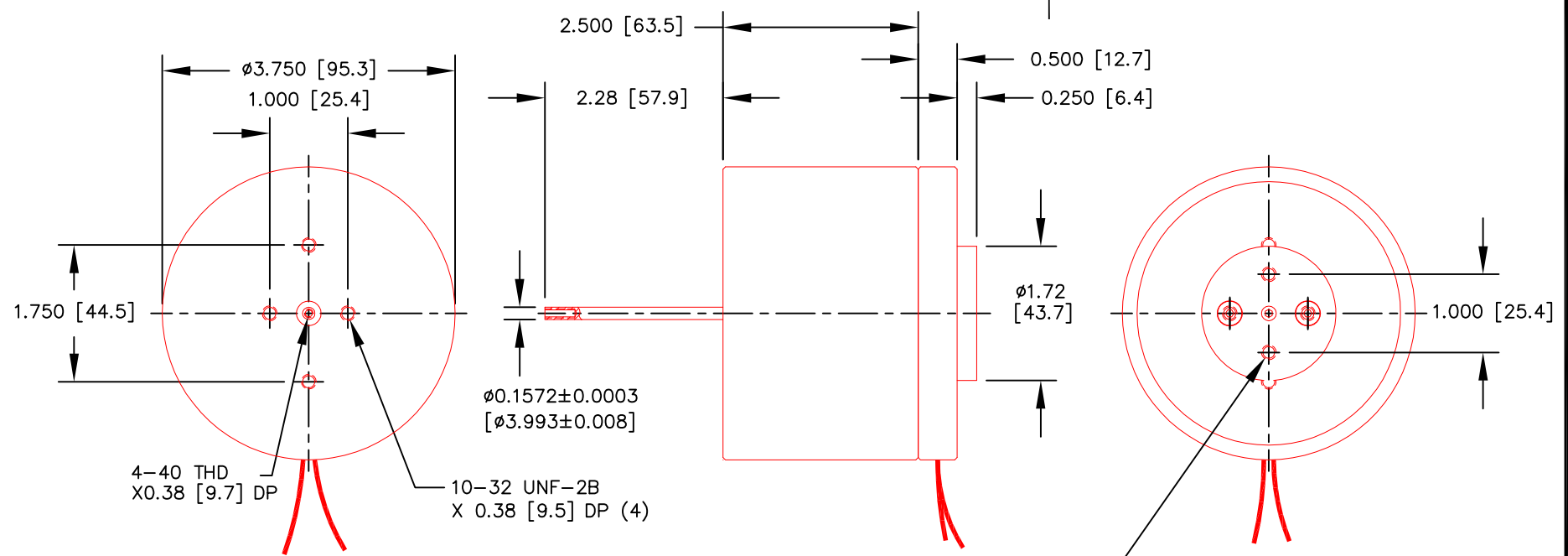
2

1

4 3 2 1

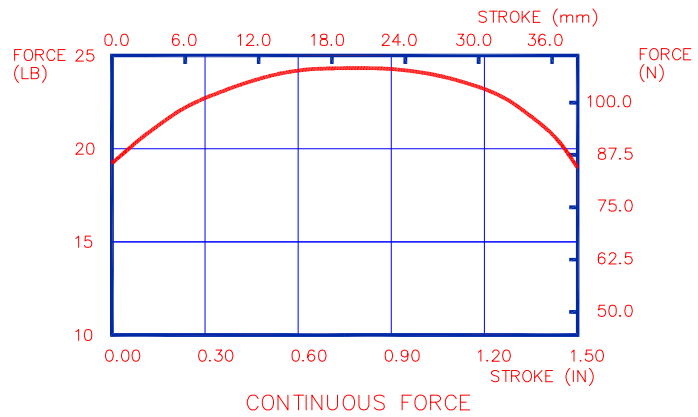
REVISIONS					
ZONE	LETTER	DESCRIPTION	DATE	CHECKED	APPROVED

SHOWN IN EXTENDED SHAFT POSITION



INTERMITTENT FORCE @10% DUTY CYCLE	343.1 N	77.1 LB
CONTINUOUS FORCE	108.6 N	24.4 LB
FORCE CONSTANT	21.1 N/A	4.8 LB/A
BACK EMF CONSTANT	21.1 V/M/S	0.54 V/IN/S
STROKE	38.1 mm	1.50 IN
COIL CLEARANCE PER SIDE	0.64 mm	0.025 IN
COIL ASSY MASS	529 GR	1.17 LB
BODY MASS	2.97 KG	6.55 LB
COIL RESISTANCE	2.1 Ohms	
COIL INDUCTANCE @ 1000 Hz	1.2 mH	
MAX CONTINUOUS POWER	55 W	
MAX TOTAL SHAFT SIDE LOAD	9 N	2 LB
LINEAR BEARING TYPE	RECIRCULATING BALL	

ALL VALUES AT 25°C



THIS DOCUMENT, WHETHER OR NOT MARKED AS PROPRIETARY, IS CONSIDERED CONFIDENTIAL AND SHALL REMAIN THE PROPERTY OF MOTICONT AND SHALL BE RETURNED TO MOTICONT UPON REQUEST WITH ALL COPIES MADE THEREOF. THIS DOCUMENT CANNOT BE UTILIZED IN THE MANUFACTURE OF ARTICLES SOLD OR OFFERED OR DISCLOSED TO ANYONE AND NO USE OF IT CAN BE MADE UNLESS EXPRESSLY AUTHORIZED BY AND UNDER THE DIRECTION OF MOTICONT. POSSESSION OF THIS DOCUMENT IS ACCEPTED SUBJECT TO THE FOREGOING.

NOTES :  
UNLESS OTHERWISE SPECIFIED

DIMENSIONS ARE IN INCHES [mm] TOLERANCES ON: DECIMALS FRACTIONS ANGLES .XXX .XX ± 1/125 ± 1/2' ± .005 ± .01 UNLESS OTHERWISE SPECIFIED		MATERIAL	CONTRACT		<b>motiCont</b>  LINEAR VOICE COIL MOTOR		
USED ON		FINISH	DRN	CHKD			
NEXT ASSY		APPLICATION		APPVD	APPVD	DWG. NO.	REV.
						GVCM-095-064-01	1
				SCALE: 1 / 2		SHEET 1 OF 1	

A

A

4 3 2 1