

4

3

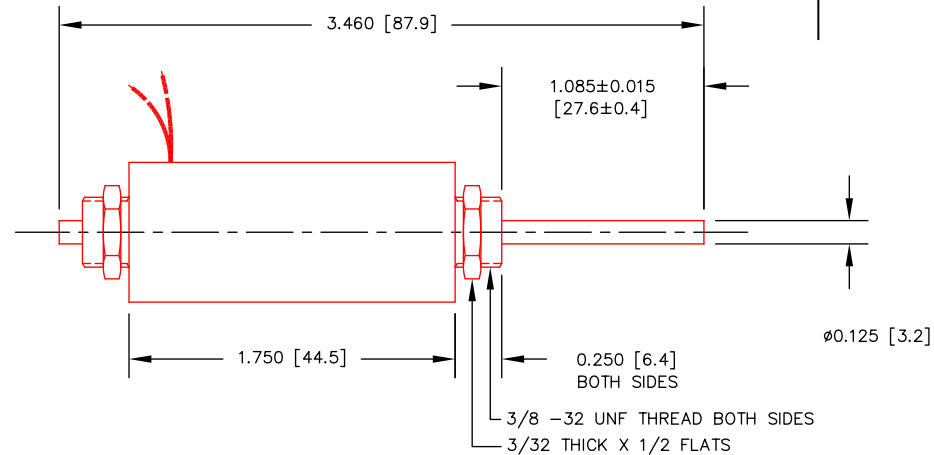
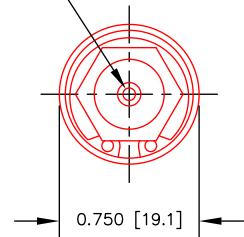
2

1

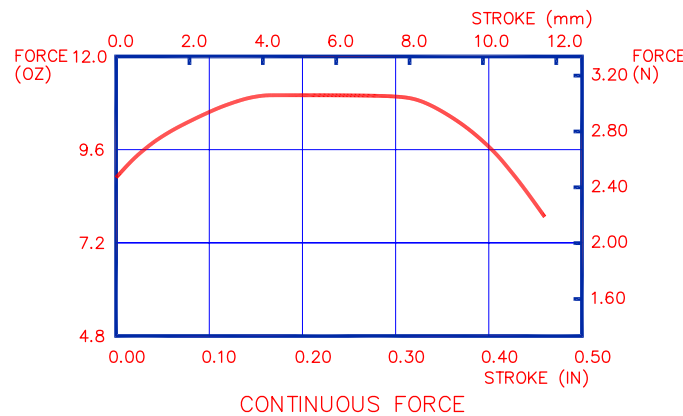
SHOWN IN FORWARD EXTENDED SHAFT POSITION

REVISIONS

ZONE	LETTER	DESCRIPTION	DATE	CHECKED	APPROVED

2-56 UNC-2B X 0.20 [5.1] MIN DP
BOTH SIDES

INTERMITTENT FORCE @10% DUTY CYCLE	9.7 N	34.8 OZ
CONTINUOUS FORCE	3.1 N	11.0 OZ
FORCE CONSTANT	3.0 N/A	10.7 OZ/A
BACK EMF CONSTANT	3.0 V/M/S	0.076 V/IN/S
STROKE	11.7 mm	0.460 IN
MOVING MASS	22 GR	0.78 OZ
TOTAL MASS	65 GR	2.29 OZ
COIL RESISTANCE	5.7 Ohms	
COIL INDUCTANCE @ 1000 Hz	0.9 mH	
MAX CONTINUOUS POWER	6.0 W	
MAX TOTAL SHAFT SIDE LOAD	2.0 N	7.2 OZ
LINEAR BEARING TYPE	PLAIN BUSHING	



THIS DOCUMENT, WHETHER OR NOT MARKED AS PROPRIETARY, IS CONSIDERED CONFIDENTIAL AND SHALL REMAIN THE PROPERTY OF MOTICONT AND SHALL BE RETURNED TO MOTICONT UPON REQUEST WITH ALL COPIES MADE THEREOF. THIS DOCUMENT CANNOT BE UTILIZED IN THE MANUFACTURE OF ARTICLES SOLD OR OFFERED OR DISCLOSED TO ANYONE AND NO USE OF IT CAN BE MADE UNLESS EXPRESSLY AUTHORIZED BY AND UNDER THE DIRECTION OF MOTICONT. POSSESSION OF THIS DOCUMENT IS ACCEPTED SUBJECT TO THE FOREGOING.

3-MOTOR MAY BE SUPPLIED WITH OPTIONAL SPRINGS.
2-FOR PROPER HEAT DISSIPATION, THE MOTOR SHOULD BE MOUNTED ON A METALLIC BODY WITH ADEQUATE SURFACE AREA WITH AN UNRESTRICTED FLOW OF AIR.

1-ALL VALUES AT 25°C

NOTES :

UNLESS OTHERWISE SPECIFIED

DIMENSIONS ARE IN INCHES (mm)
TOLERANCES ON:
DECIMALS FRACTIONS ANGLES
.XXX .XX ± 1/125 ± 1/2°
± .005 ± .01
UNLESS OTHERWISE SPECIFIED

USED ON	NEXT ASSY
APPLICATION	

MATERIAL

FINISH

CONTRACT

DRN

CHKD

APPVD

APPVD

motiCont

LINEAR DIRECT DRIVE MOTOR

SIZE	CODE	DWG. NO.	REV.
A		DDL M-019-044-01	1

SCALE: 1 / 1 SHEET 1 OF 1

4

3

2

1